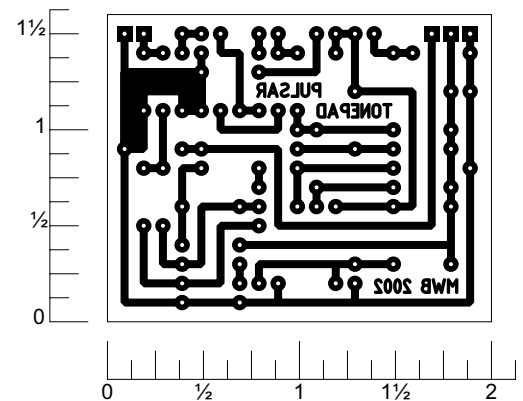
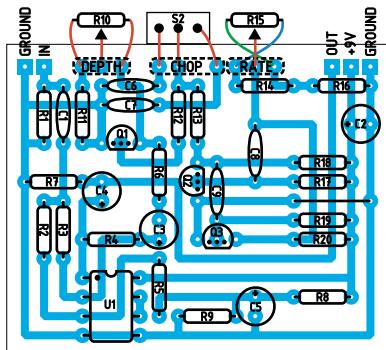


This circuit is a workalike of the ultra-rare Electro Harmonix Pulsar tremolo pedal. Jacks and bypass switch are not shown on the layout. Any registered trademarks remain the property of their owners. Visit tonepad.com for more information on this project.



READY TO TRANSFER

Resistors

R1 - 1M
R2, R7, R18, R20 - 47k
R3, R9 - 30k
R4 - 33k
R5 - 39k
R6, R11 - 10k
R8 - 27k
R10, R15 - 100k log pot

R12, R13 - 200k

R14 - 68k

R16 - 1k1

R17 - 2M2

R19 - 330k

Capacitors

C1 - 0.1uF
C2 - 47uF electro
C3 - 4.7uF electro

C4 - 1uF electro

C5 - 22uF electro

C6 - 0.22uF

C7 - 0.022 uF

C8, C9 - 0.47 uF

Semiconductors

Q1, Q2, Q3 - 2N5088

U1 - TL072

Switches

S1 - heavy-duty DPDT

S2 - SPDT toggle or stomp switch

