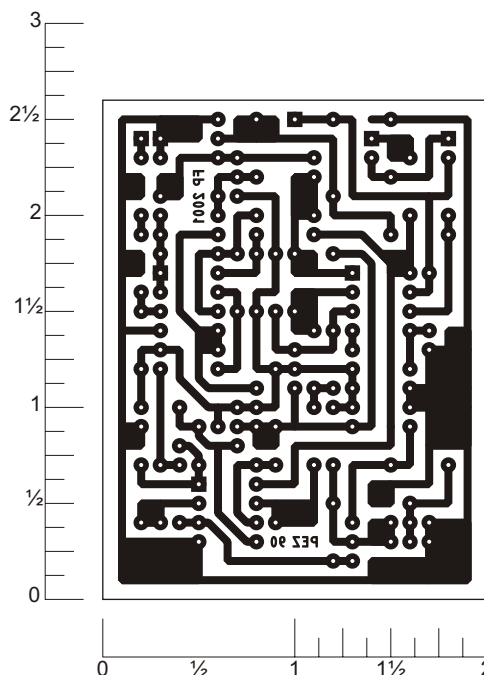
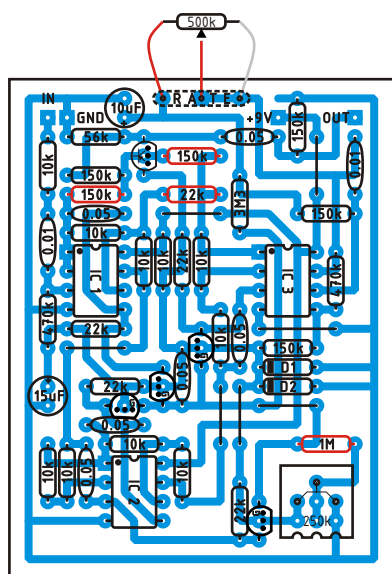


Here's the layout for the Phase 90. Parts in RED are for mods, go to <http://www.geofex.com> for more information. Off board components except for the potentiometers are not shown on the layout. Trademarks remain property of their owners.



Parts List

Resistors

10 - 10k
6 - 150k
5 - 22k
2 - 470k
1 - 56k
1 - 1M
1 - 3M3

Pots

1 - 500k lin.
1 - 250k trim.

Capacitors

6 - 0.05 μ F
2 - 0.01 μ F
1 - 10 μ F
1 - 15 μ F

Diodes

1 - 1N914
1 - 3.6V to 4.7V zener

Transistors & ICs

1 - 2N4125
4 - 2N5952
3 - TL072

Schematic

